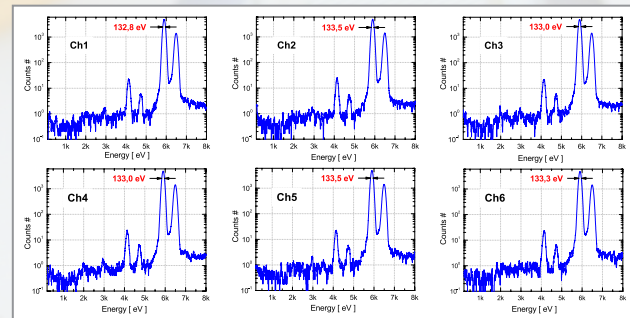


Extra Large Area for Synchrotron Applications

To increase the detector active area and maintain the optimum energy resolution, monolithically integrated **Multicell SDDs** have been developed with extra large active areas of up to 600 mm².

These devices are suited for ultra high count rate applications, as well as for applications requiring minimum measuring time.

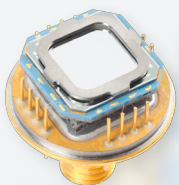
- ▶ Optimum performance due to the integrated FET
- ▶ Ultra low leakage current due to the polysilicon technology
- ▶ No dead area for the monolithic chip
- ▶ 2-stage peltier cooling for easy operation in compact systems
- ▶ Custom specific packaging



Fe⁵⁵ spectrum measured with the 600 mm² SDD area demonstrating the homogeneity of all six detector cells.

SDD-100

Active area 1 x 100 mm²
typ. 133 eV @ MnK, -30 °C
P/B up to 15,000
Input count rate up to 1 Mcps



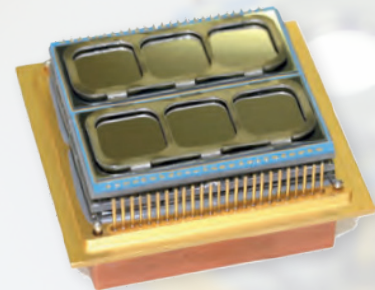
SDD-300 Bar

Active area 3 x 100 mm²
typ. 138 eV @ MnK, -20 °C
P/B up to 15,000
Input count rate up to 3 Mcps



SDD-600 Field

Active area 6 x 100 mm²
typ. 138 eV @ MnK, -20 °C
P/B up to 15,000
Input count rate up to 6 Mcps



PNDetector GmbH
Emil-Nolde-Str. 10 · 81735 München
Phone +49 89 309087-100
Fax +49 89 309087-277
info@pndetector.de